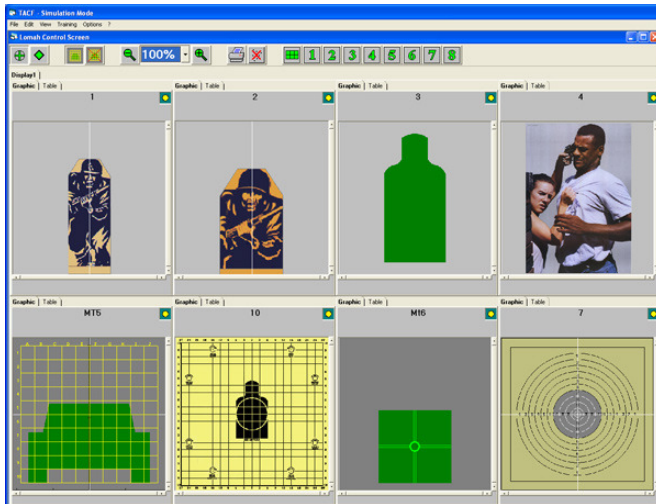
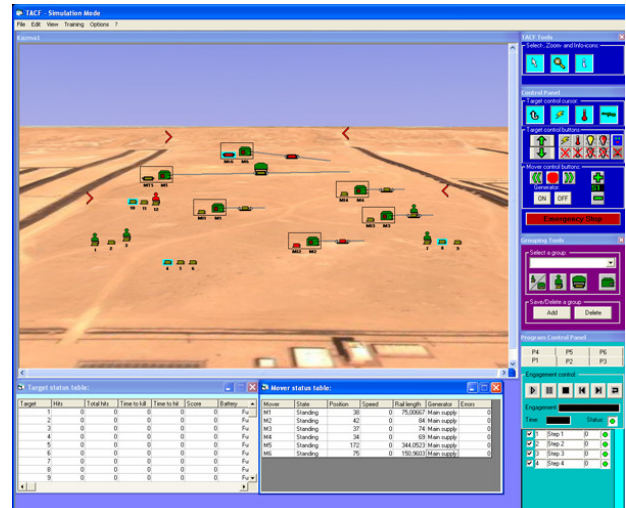


CENTRAL RANGE CONTROLLER TYPE 667



Range Overview



Training Range

The Central Range Controller type 667 is a high performance computer, which features the Windows XP operating system. The 667 uses the latest Core 2 technology and comes with ample memory and hard disk space for all modern Windows applications. Additional hardware is provided to make full use of the multimedia features of Windows XP and to interface with the MS Instruments PLC equipment.

The system is supplied with two monitors where the first monitor is used for control of the system while the second monitor displays an overview of the range and all results as they are received.

The AMS control software is fully user-configurable to allow programming of pop-up target sequences on all or individual targets. A range of target outlines are supplied and printouts are easily produced.

SPECIFICATION

Internal Hardware	(minimum)	External Hardware	
Processor	Core 2 Quad Processor	Keyboard	102 Keys
Memory	> 1GB	Mouse	USB
Hard Drive	> 160 GB	Displays	2 off 19" SVGA LCD
DVD/CDRW	> 32 Speed	Printer	HP Deskjet
Software		Desktop Dimensions	
Operating System	Windows XP Pro	Height	210mm
Application	MS Office Pro AMS Range Control Software	Width	630mm
		Depth	460mm