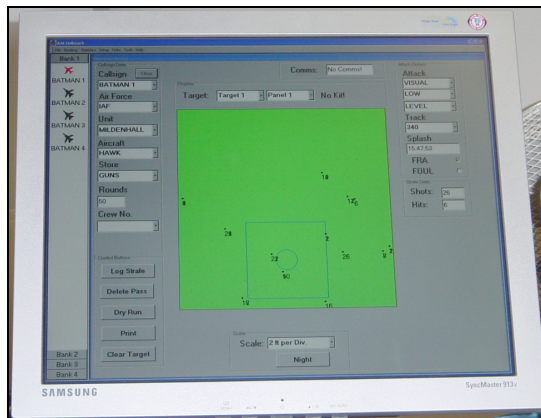
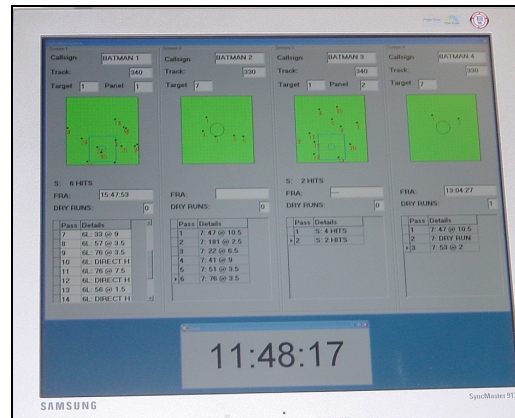


## CENTRAL RANGE CONTROLLER TYPE 667



Operator's Screen



Air-Traffic Controller Screen

The Central Range Controller type 667 is a high performance computer, which features the Windows XP operating system. The 667 uses the latest Core 2 technology and comes with ample memory and hard disk space for all modern Windows applications. Additional hardware is provided to make full use of the multimedia features of Windows XP and to interface with the MS Instruments PLC equipment.

The system is supplied with two monitors where the first monitor is used for control of the system while the second monitor displays an overview of the range and all results as they are received.

The unit may optionally be packaged in a rugged 19" rack case fitted with wheels for convenient stowage. The cabinet has a lockable door for security and includes stowage areas for integral transceivers, junction boxes and other interface units.

The rear panel of the rack has a single mains input connector for convenience and mains and signal outputs for the remote screens and range interconnections.

### SPECIFICATION

<b>Internal Hardware</b>	(minimum)	<b>External Hardware</b>	
Processor	Core 2 Quad Processor	Keyboard	102 Keys
Memory	> 1GB	Mouse	USB
Hard Drive	> 80 GB	Displays	2 off 19" SVGA LCD
DVD/CDRW	> 32 Speed	Printer	HP Deskjet
<b>Software</b>		<b>Desktop Dimensions</b>	
Operating System	Windows XP Pro	Height	210mm
Application	MS Office Pro WINATOG Range Control Software	Width	630mm
		Depth	460mm