

WINDOWS AIR TO GROUND CONTROL SOFTWARE

A Windows-based resources management programme controls the Air-to-Ground Strafe and Bomb-scoring systems provided by the Company.

As well as providing complete diagnostic and configuration facilities for the system hardware, the software is designed to give results from all connected instruments in a simple and rapid manner.

The software comes complete with a data-warehousing suite and Range Management module. Range-Booking and usage functions assist in cost-effective utilisation of available range resources.

The Range Processor has two control screens: a user screen and an additional unit for the air-traffic controller.

The software running on the Strafing Range Processor is able to communicate with up to 12 Strafing targets and 8 sighting quadrants as standard. The shot or bomb-drop positions are displayed on screen and clock/distance readings given as well as Direct Hit/Hit/Miss information.

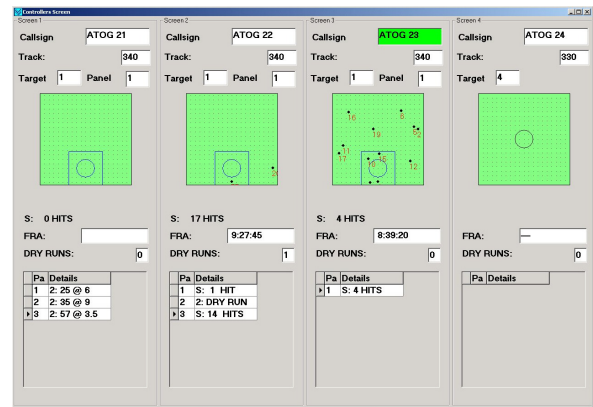
The software also displays a range of information about the Callsign, Aircraft type, Store, Attack profile etc. as well as providing the ability to log First Run Attacks, Dry Runs, Bootlegs and Fouls.

The resulting data is combined into daily and monthly statistical reports for further analysis.

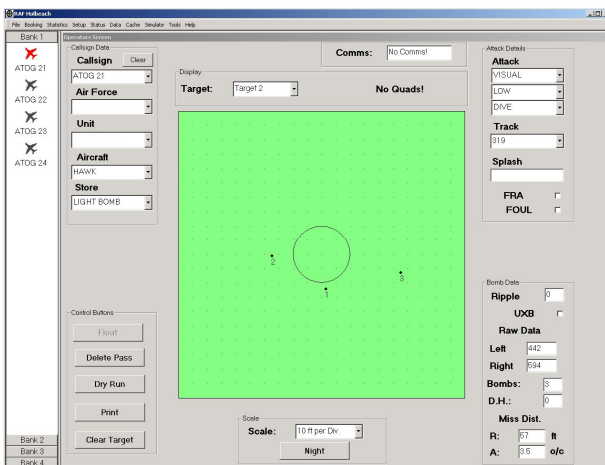
The data may be stored to disk, assembled into a summary report and printed or faxed from the internal modem to the pilot's home base.

The Air-Traffic Controller maintains a complete overview of all aircraft in-circuit from the control screen. The system allows 'bootleg' flights without interrupting the setup, or delaying data processing.

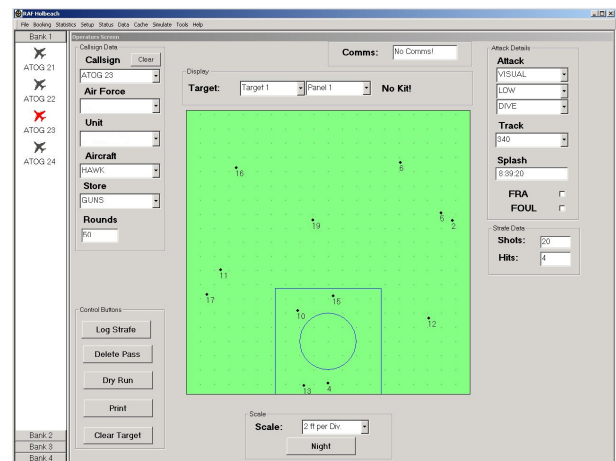
The display also has a 'night' mode, with reduced contrast during night-time firing.



ATC SCREEN



BOMB-SCORING



STRAFE-SCORING